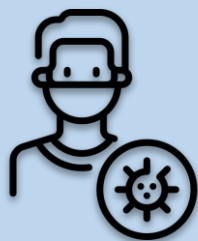


# Covid-19 Outbreak Contingency Plan – September 2021

This plan outlines what **Uplands Manor Primary School** is doing to keep everyone safe

When should my child self-isolate or miss school?



- All children **MUST** attend school unless they are ill.
- From 16th August 2021, children under 18 (or double-vaccinated adults) do not need to self-isolate or miss school if a member of their household or a contact, has Covid.
- Instead, they will need to book a PCR test but can continue coming to school so long as they have no symptoms and the test result is negative.
- If your child develops Covid symptoms at home, they should stay at home and should book a PCR test), **NOT a Lateral Flow test**.
- If your child develops Covid symptoms at school, they will be sent home and you should book them a PCR test.
- If your child tests positive for Covid, they will need to self-isolate. The rest of the household does not need to self-isolate if they are under 18 or fully vaccinated – but instead should book a PCR test.

What has the academy got in place to prevent the spread?





- A comprehensive risk assessment is in place and regularly updated - all updates and important information will be shared as and when needed.
- Cleaning before, after and throughout the school day.
- Twice weekly testing to continue for all staff.
- Hygiene measures in place around school.
- Majority of our staff have been vaccinated.
- A comprehensive outbreak management plan in place.
- Following all government guidelines.


## Covid Cases - Our Action Plan

Number of cases	Description	Actions
<p><b>Low Community Transmission</b></p> <p>Transmission</p>	<p>No cases of Covid within school for 10 school days.</p> <p>Cases of Covid locally are low and / or stable.</p> <p>Hospitalisation / Deaths due to Covid nationally are low.</p>	<ul style="list-style-type: none"> <li>• No specific Covid measures are necessary (government guidelines)</li> <li>• Reminding children of good hand hygiene</li> <li>• Ensuring good levels of ventilation around school (where practical)</li> <li>• Ensuring children / staff to stay at home if they have Covid symptoms (and to book a PCR test)</li> <li>• Thorough cleaning as normal</li> <li>• Staff should continue to test themselves using Lateral Flow Tests until the end of September</li> </ul>
<p><b>Rapidly Rising Community</b></p> <p>Transmission</p>	<p>No current Covid cases have been recorded at school, but ...</p> <p>Cases of Covid are rising rapidly in the community causing disruption to schools</p> <p>Public Health England issue warnings of expected local/national infection wave</p>	<ul style="list-style-type: none"> <li>• Levels of hand-washing increased</li> <li>• Large indoor public performance audience numbers reduced</li> <li>• Clinically Vulnerable staff meet with Line Managers review their individual risk assessments and discuss additional protection (e.g. use of face coverings, reduction in movement between classes/groups)</li> <li>• Visits by parents and professionals to the school will be decided based on a risk assessment</li> </ul>

# Covid-19 Outbreak Contingency Plan – September 2021

## Our Action Plan for an outbreak in the Community or School

Number of cases	Description	Actions:
<p><b>A single child tests Positive</b></p> 	<p>A single child tests positive for Covid in a class. There are fewer than 5 cases in the year group. No other year groups are affected.</p>	<ul style="list-style-type: none"> <li>• The child self-isolates for 10 days. Remote learning will be provided if they are well enough to complete it as outlined in our <b>remote learning policy which can be found on our website.</b></li> <li>• The parents of the child are contacted directly by NHS Track and Trace to establish likely contacts.</li> </ul> <p>Likely contacts will be contacted by NHS Track &amp; Trace and advised to book at PCR Test. The school will contact parents to advise this if close contacts are known.</p> <p><b>Children do not need to miss school or self-isolate whilst they wait for the result of the PCR test unless they have Covid Symptoms.</b></p>
<p><b>5 children or staff within a year group test positive within 10 days of each other</b> <b>OR</b> <b>3 children or staff in a single Class/ Club within 10 days</b></p> 	<p>There have been 5 cases of Covid across a year group within 10 days which could mean that Covid is spreading within a group of children.</p>	<ul style="list-style-type: none"> <li>• As above for each positive case.</li> <li>• The school will discuss the outbreak with Sandwell Public Health and agree strengthening protective measures.</li> <li>• Re-introducing staff face masks for corridors and communal areas.</li> <li>• Adapting, limiting or postponing indoor sporting events, trips, open days and performances.</li> <li>• Reverting to video-link Assemblies in classrooms.</li> <li>• Updating of our risk assessment.</li> <li>• Deep clean of building if in-school transmission is high.</li> </ul>

<p><b>What policies do we have in place to prevent the spread of the virus?</b></p> 	<p>The following policies can all be found on our website:</p> <ul style="list-style-type: none"> <li>• Covid-19 Risk Assessment</li> <li>• Covid-19 Outbreak Management Plan</li> </ul>
---	--